

Medication Management:

Implications for Practices in CMS' Merit-Based Incentive Payment System (MIPS)

Did You Know?

More than half of Americans have at least one chronic condition, and **1 in 4** have two or more. Treating people with chronic conditions accounts for **86%** of healthcare spending¹

Only **33-50%** of people with chronic conditions adhere completely to prescribed medication therapies²

Nearly **1 in 3** adverse events leading to hospitalizations are associated with medications²

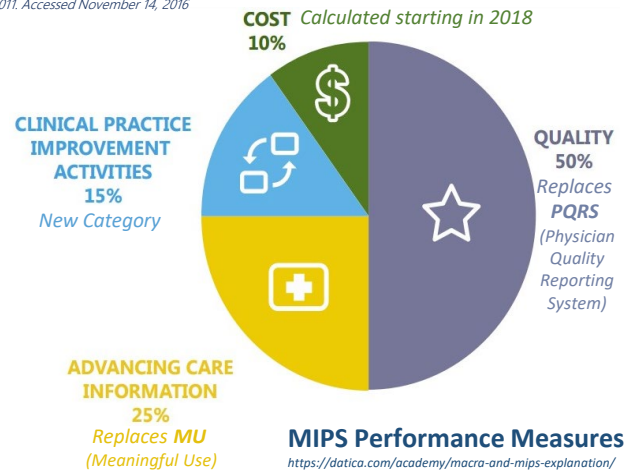
>\$400 Billion is spent on medications in the U.S. each year³
~\$300 Billion is spent on the misuse, underuse & overuse of medications⁴

¹ Centers for Disease Control and Prevention. Chronic Disease Overview. www.cdc.gov/chronicdisease/overview/index.htm. ² Brown M, et al. Health Affairs. 2010; 29(5):906-913. ³ IMS Health Report 2016. ⁴ NEHL. Bend the Curve: Health Care Leader's Guide to High Value Health Care. www.nehi.net/publications. Posted December 16, 2011. Accessed November 14, 2016

CMS' Quality Payment Program (QPP) provides practices the means and incentive to provide their patients high-value, high-quality, patient-centered care

For practices who choose not to participate in Advanced Alternative Payment Models (APMs), CMS reimbursement rates will be determined by MIPS

Approximately **25%** of MIPS quality performance measures are directly impacted by medication management



For more information about CMS' Quality Payment Program: <https://qpp.cms.gov/>

Sample MIPS Measures Impacted by Medication Management

Quality Performance Measures ⁵	HbA1c Poor Control (>9%)	Controlling High BP (<140/90)	Medication Management in Patients with Asthma
	IVD: Use of Aspirin or Other Antiplatelet Therapy	Documentation of Current Medications in the Medical Record	Antidepressant Medication Management
	Falls: Screening for Future Falls Risk	Statin Therapy for the Prevention and Treatment of CV Disease	Medication Reconciliation Post-Discharge
Clinical Practice Improvement Activities ⁶	Anticoagulant Management Improvements	Implement Chronic Disease Self-Management Support Program	Glycemic Management Services
	Medication Management Practice Improvements	Training and Waiver for Provision of Medication-Assisted Treatment of Opioid Dependence	Implementation of Antibiotic Stewardship Program

- * Effective medication management processes can significantly impact a practice's ability to perform well in their chosen MIPS measures and in addressing population health-specific issues
- * Consider how your practice can leverage local pharmacy partners to support your practice's care of chronically ill, high risk patients and in turn, your performance and quality initiatives

⁵ Full List of MIPS Quality Measures: <https://qpp.cms.gov/mips/explore-measures/quality-measures?search=325&measureType=Outcome>

⁶ Full List of MIPS Improvement Activities: <https://qpp.cms.gov/mips/explore-measures/improvement-activities?py=2019#measures>